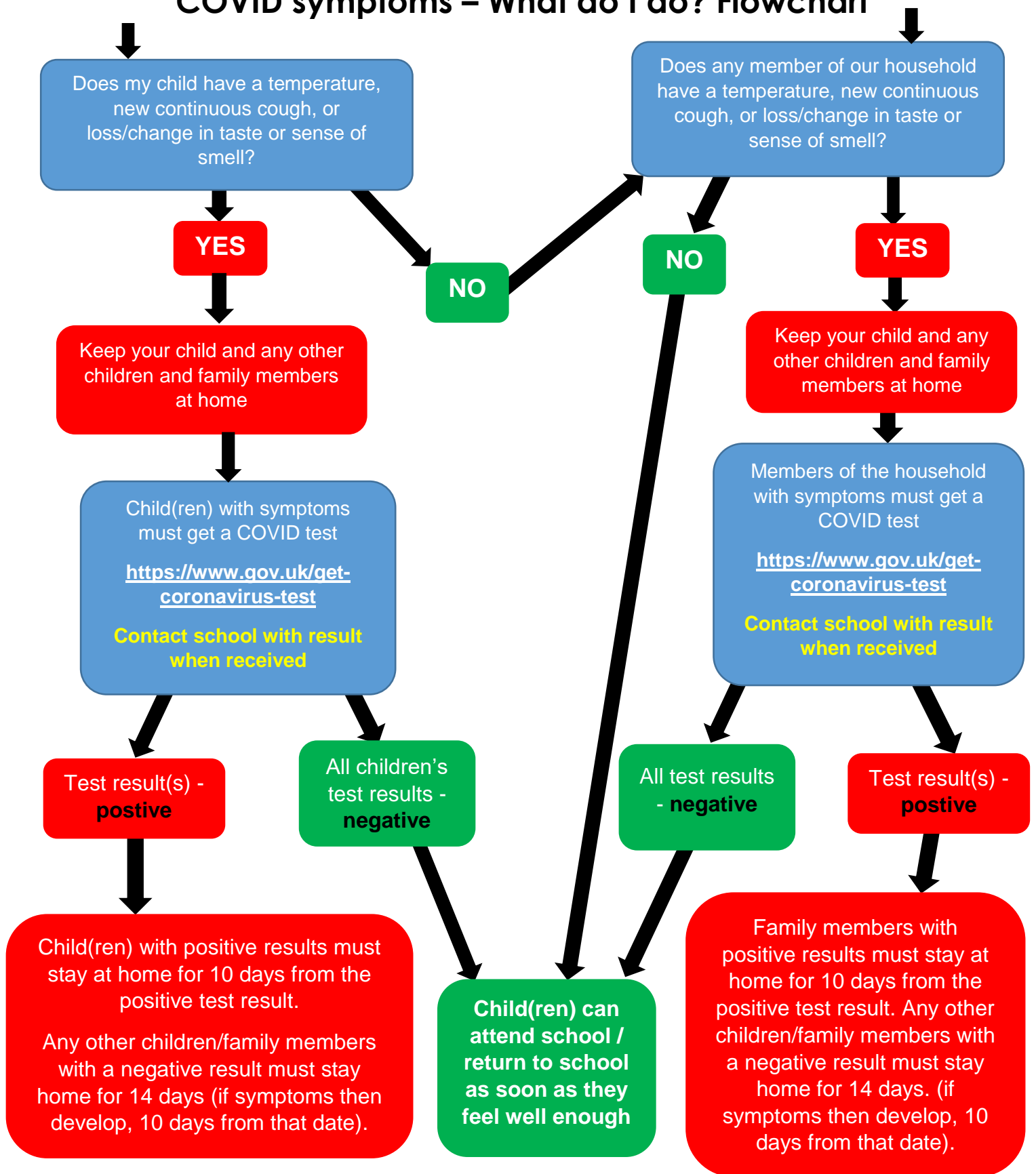


# COVID symptoms – What do I do? Flowchart



If you are contacted by **NHS Test and Trace** (and your child(ren) was with you during the contact with the COVID 19 person) you and your child(ren) must isolate for 14 days, even if either of you receive a negative test.

If your child was not with you, your child(ren) can attend school as long as you do not develop symptoms. Otherwise follow the flow chart above

Whilst waiting for a test booking or test result, please follow government guidelines for isolation. ie. Do not leave the house (unless to attend a test centre), or have visitors in your house.