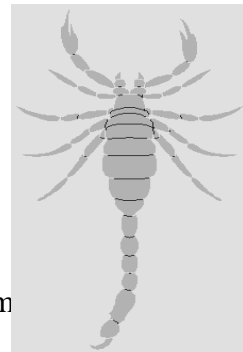
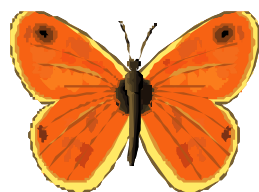
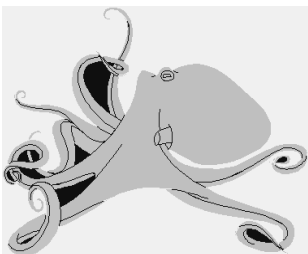
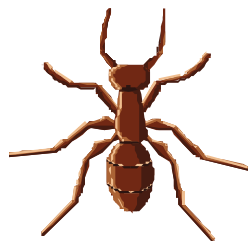
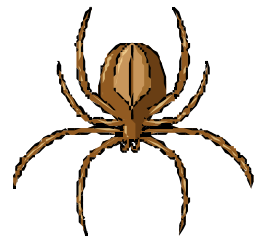
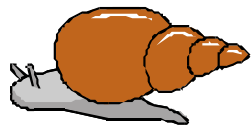
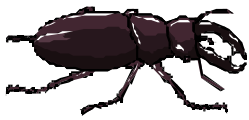
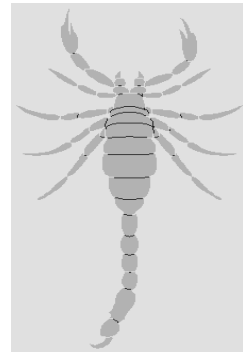
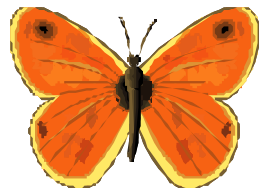
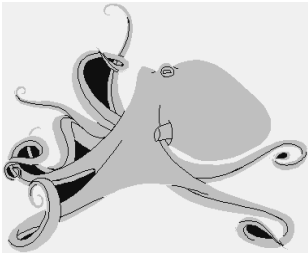
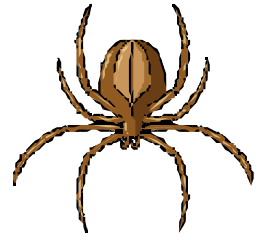
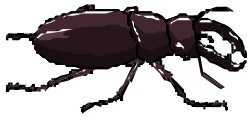


Classification of Invertebrates

Look at the pictures below. Decide whether each is an insect, arachnid or mollusc...

Insects	Arachnids	Molluscs
six legs, three body parts, e.g. ants, wasps, butterfly	legs, two body parts e.g. spiders, scorpion,	slimy foot, often have a shell e.g. snails, octopus, slugs

Cut and stick or simply draw the pictures in the correct column.



Cut and stick or simply draw the pictures in the correct column