

# Class Booklet



## What class am I in?

You are in **Year 1/2L**

**Year 1** will start in your new class on Monday the 7th September

**Year 2** will start in your new class on Wednesday 9th September

You will be dropped off and picked up at **Gate 1 and 2**

Your time in school will be **8.30a.m - 3.00p.m**

**You will need to be punctual to school in order to enter school at the correct gate and the correct time.**

---

## Welcome

Some of you have attended school for the catch up, check in and prepare sessions and some have remained at home. We hope this booklet gives you an insight into what Brynmill Primary school will be like when we all return in September. Everyone at Brynmill is really looking forward to welcoming you back and starting a new academic year.



## What will be the same at Brynmill?



The building is still the same.



There will be teachers and adults I know who will help me.

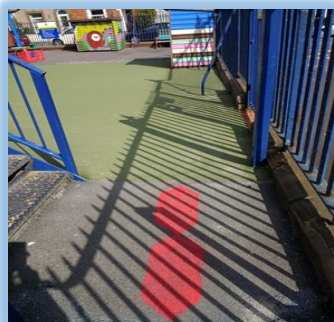
**Mrs Lewis** will be your class teacher.



Mrs Ciaburri and the well-being team may check in with us.



I will have playtime and lunchtime play in my usual yard with the children in my class. Each class will have a zone to play in. I will stay in my own zone.





I will come to school at **Gate 1 and 2** at the front of the school. There will be lines on the pavement to help us queue up 2 m away from other people.

There will be adults at the Gate to greet me.

I will use hand sanitiser as I come into school at the sanitising station.



Gate 1



Gate 2



At lunch time ; I will eat my lunch in the classroom with the dinner lady. I will then go outside for playtime with my class teacher.



There will only be **one** child at a time who will use the toilet.



Toilets will be cleaned regularly. I will make sure I wash my hands thoroughly.



I will be reminded regularly through the day to wash my hands and also use hand sanitiser.

If I have any questions I can ask the adults in school.



**We look forward  
to seeing you back at school.**