

All parents and children to enter the site via main school gate, remain on left hand pavement .

Exit on opposite side past Flying start

MHCPS Meads Site

Classroom
entry/exit for
1SF/CW

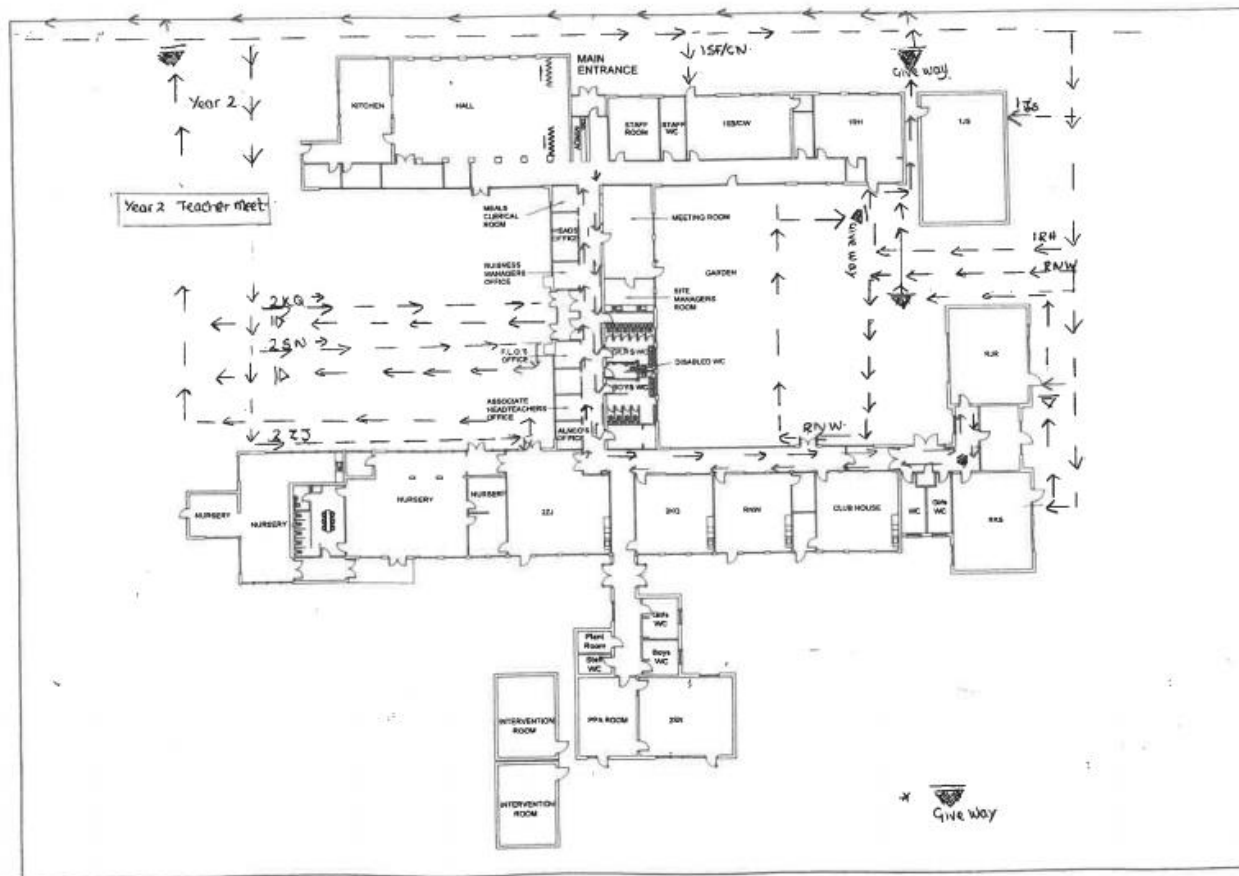
Entry for classes 1RH, 1JS, RJR,
RKS, RNW.

Please follow the one way system
and signs to classrooms, but be
aware of give way points to
observe social distancing

Year 2 will enter and exit
at Playground gate.

A member of staff will meet
the bubbles at the school
gate where children will line
up ready to enter the school
building. Staff will then bring
the children out to meet
parents at the school gate at
the end of school session

Children attending the Hub
Child Care provision to
enter and exit via
Prioryville entrance



Flow around the school

All staff and pupils to follow
the one way system around
the school building –
signage will also show the
way.

Pupils will be accompanied
by an adult at **all** times