

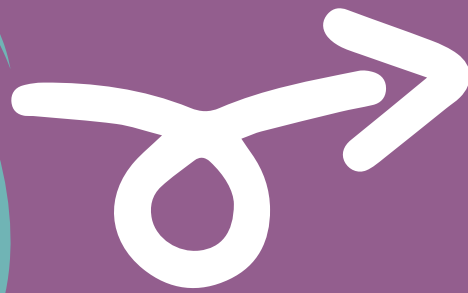


Dyslexia

Myth busters

Myth

"A Diagnosis is required for my child to access support in school"



Fact

Pembrokeshire schools use screening tools for dyslexia to identify children who may need additional help. This means schools are able to put the appropriate support in place as soon as possible.

"In order for my child to receive support in school I need to pay for a private assessment"



You do not need to pay for a private formal assessment. If you feel that your child requires additional support, speak with the school. Your child's school can arrange support and/ or interventions to be put in place for children who need it.

Schools also have a referral process for children who may require further support or an assessment (FREE) Ask the school for more information on this.

"My child has dyslexia and therefore needs to use coloured overlays or tinted glasses for reading"



No, not necessarily. Visual difficulties can be found in children of *all reading abilities*. Book an appointment with an Optometrist if your child's difficulties include:

- words 'moving' on the page
- difficulty reading black print on white paper
- If they often lose their place or skip lines and find it difficult to track their reading.

Strategies and resources to support children's individual needs can be used.

