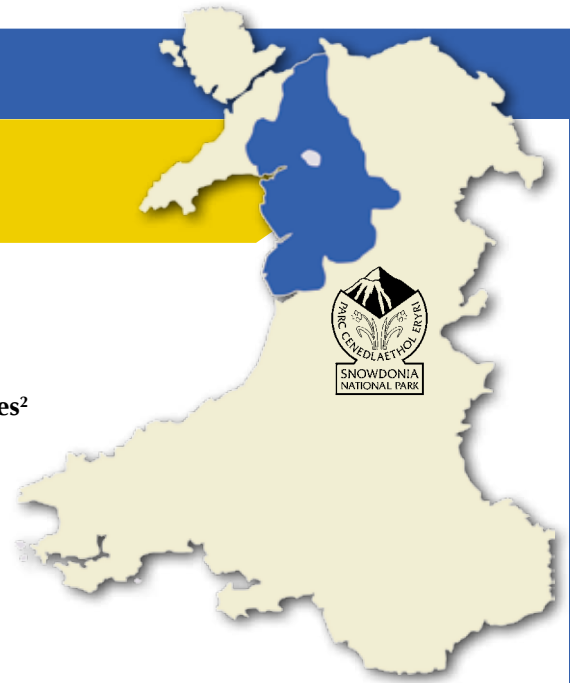
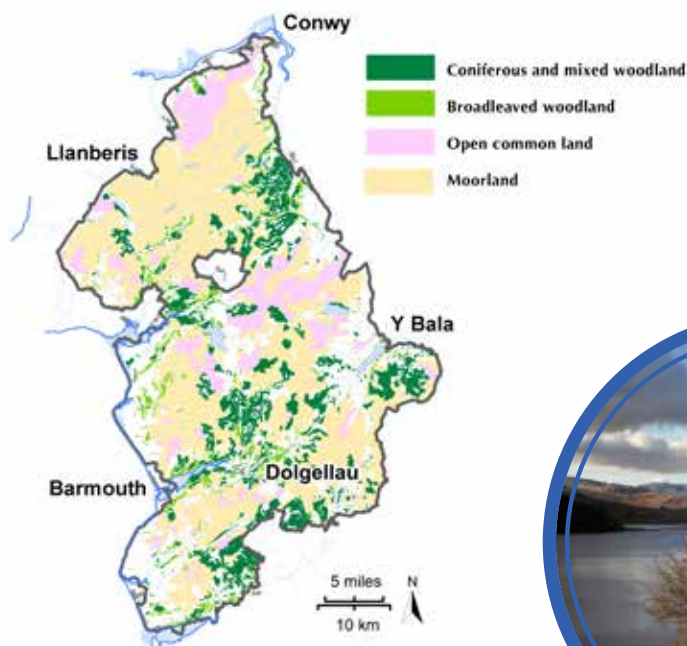


Snowdonia National Park



Designated	18th October 1951
Size	2,176km² 823miles²
Landscape features	
Highest point:	Snowdon 1,085m
Lowest point:	Beaches 0m
Longest beach:	Morfa Dyffryn 7km
Largest lake:	Llyn Tegid 10.24km² (1,024ha)
Largest reservoir:	Trawsfynydd 4.8km² (480ha)
Largest deciduous woodland:	Dyffryn Ffestiniog Woodland 2.49km² (249ha)
Largest coniferous woodland:	Coed y Brenin, Dolgellau 20.58km² (2,057ha)
Largest moorland area:	Migneint 142.35km² (14,235ha)

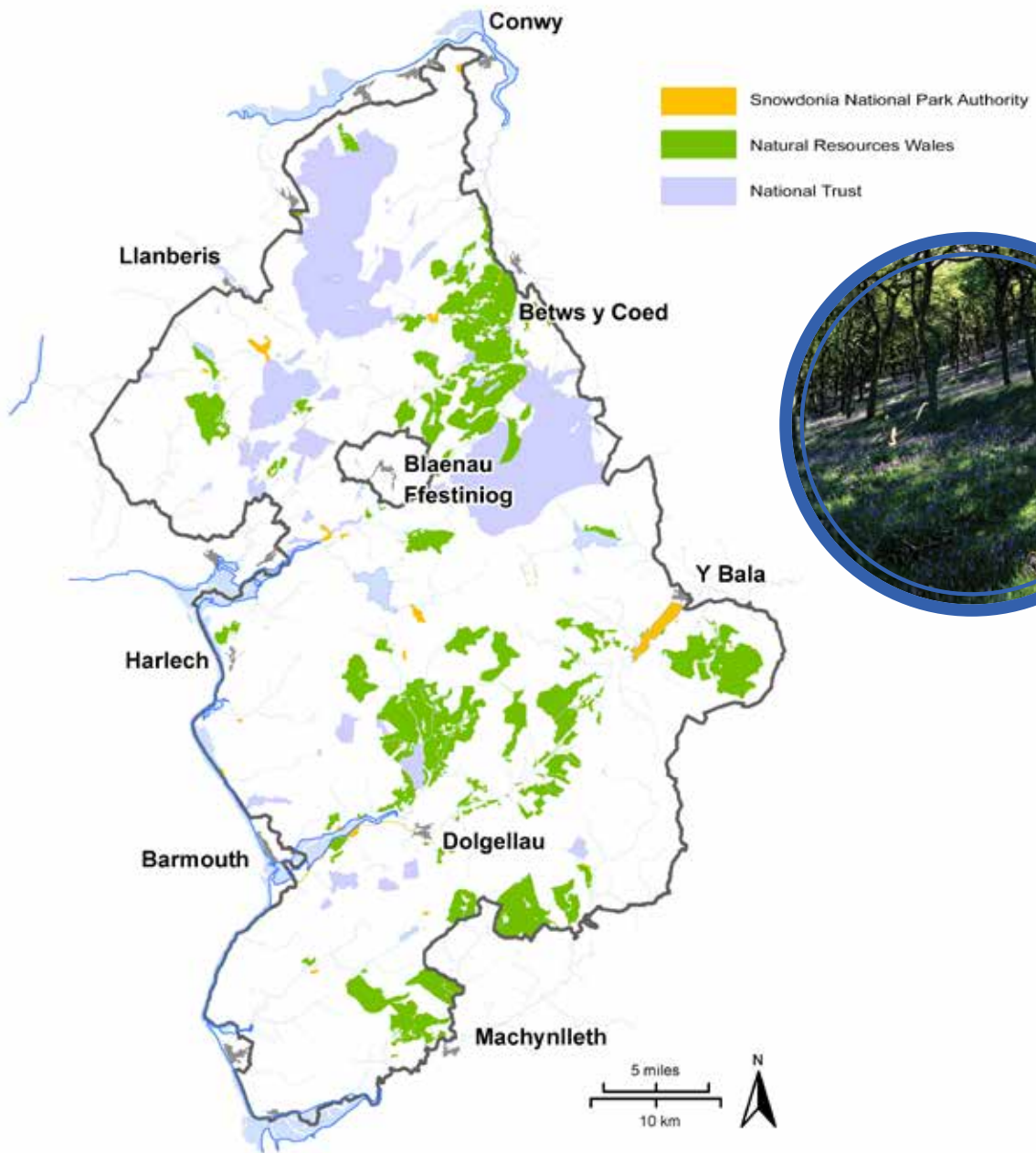
	Coast	Rivers	Footpaths	Bridleways
Miles	37	434	1,498	164
Kilometres	60	700	2,411	264



© Crown copyright and database rights 2012 Ordnance Survey 100022403



Private Ownership	72.5%
Snowdonia National Park Authority	0.5%
National Trust	10.0%
Natural Resources Wales	17.5%



© Crown copyright and database rights 2012 Ordnance Survey 100022403



Protected Areas

National Nature Reserves	5,731ha
Special Areas of Conservation	56,599ha
Sites of Special Scientific Interest	61,387ha
Special Protected Areas	24,301ha

Y Migneint

An area of moorland/blanket bog reaching a height of 479m and covering an area of 142.35km². The area is used for agriculture but provides us with many ecosystem services. It's an important nesting ground for birds and also stores water and carbon and cleans the water for us. The area is under threat from lack of water, misuse (e.g. scrambler bikes) and fires. To help conserve the area, ditches created to drain the land in the past are being filled in and blocked to store water in the upland. This will help the plants store carbon for the future.

Morfa Harlech

An area of sand dunes at sea level, 6km² in size. The area is used for agriculture, leisure and a conifer plantation. The dunes are important as coastal protection for Harlech and as an important habitat for some rare plants and animals. The area is threatened by sea level rise, erosion of the dunes and rubbish from ships at sea. Rare sand lizards can be found here and the population was given a boost as some were reintroduced.

Llyn Tegid (Bala Lake)

The largest natural lake in Wales lying at a height of 163m covers an area of 10.24km². The lake is 43 metres deep. Llyn Tegid is a SSSI and a Ramsar site as an important 'wetland'. The lake is used for leisure (fishing, boating and canoeing) as well as helping to supply water to Cheshire. Two unique species, the gwyniad fish and glutinous snail live in the lake which is under threat from toxic algae. This is caused by nitrates and phosphates. Rescue boats are the only engine boats allowed on the lake to reduce the pollution levels and the Snowdonia National Park Authority (SNPA) works closely with the local farmers and Natural Resources Wales to monitor the quality of the water that enters the lake and to reduce the risk of pollution.



Under threat - *Lloydia serontina*

Known also as the Snowdon Lily it's an arctic alpine plant that likes a cold environment with snow and ice on craggy slopes and poor soil where there are few nutrients. This is the only place in the world where you will find the Snowdon Lily. Climate change and mild winters are a real extinction threat. There's been some respite in the two harsh winters of 2009 and 2010. The hope is that the plants will become stronger. However if we then have dry hot summers it will undo the benefits of the cold winters. On top of that, cold winters attract the winter mountaineers with their crampons and ice picks to walk on snow and ice climb, in the exact area where the Snowdon Lily grows. What's the answer? Ban winter mountaineering? Transplant the plants to a fridge? Attempts have been made to grow these plants from seed and transplant them onto the slopes, but with limited success. The next step? Well that's up to you and me. Walk, share lifts, switch off all those machines that have red light on them, and do whatever you can to reduce the emissions of carbon dioxide to the atmosphere. Extinction is a looming reality for these plants on our doorstep.



Threatening - *Rhododendron ponticum*

This alien species comes from the Himalayas and threatens the wildlife of Snowdonia. It was introduced as an evergreen plant with large flowers to estate gardens in the 18th century but has since spread and become a threat. As it is evergreen it produces a dense, dark canopy which stops any native species from growing underneath it. Hardly any insects or bees are attracted to it. With no insects, you won't find any birds nearby. It has very light seeds which fly far with the wind and will grow anywhere. In some areas it has taken over with a vengeance. Snowdonia National Park Authority and landowners have declared war on the plant and plan to exterminate it. It's either injected with poison or chopped down and burnt. Conservation sometimes means that you have to be cruel to be kind to other species which are supposed to grow here.



Visitors



Facts and figures

about 4 million visitors,
10 million visitor days.

What do the visitors do here?

Most of the visitors to Snowdonia come for quiet peaceful recreation, to enjoy the views and walk the mountains.

Visitor spend per head

£40

Visitor advantages

Tourism is worth about £400 million to the local economy every year and sustains about 6,000 direct jobs.

Visitor disadvantages

Tourism is seasonal and some shops which rely on tourism alone close over winter. Snowdonia is a very busy place in the summer months, as the number of visitors increase dramatically. Visitors have an impact on the land, causing footpath erosion and, as the primary purpose of the National Park is to 'conserve and enhance', any erosion needs to be fixed. Footpaths cost about £100 per meter to maintain.

Sustainable tourism - Sherpa bus service

The Sherpa bus is an integrated bus route for the North of Snowdonia. It links up the most popular walking areas by bus. At busy times it is less stressful to park in a Green Key Car Park and catch the Sherpa bus to your setting-out point than trying to park right next to it. This will not only mean less traffic in the Park but also provide a way of accessing popular honey-pot locations such as Ogwen Cottage and Pen-y-Pass when their car parks are full. It also provides more variety for walkers as you can go up one route, down another and get the bus back to your car/train station. To encourage its use, Sherpa adult bus fares are just £1 on the S1 (Llanberis - Pen y Pass), S2 (Llanberis - Bethesda/Betws/Llanwrst) and the S6 (Bangor/Bethesda - Betws). Two passengers up to the age of 16 can travel free with each fare paying adult. Sustainable for the environment and your pocket!



Population



Population 2011 25,702

Population by age:

0 - 15 3,846
16 - 64 15,362
65 + 6,494

% Welsh Speakers 58.6%

% Economically active 67.3%

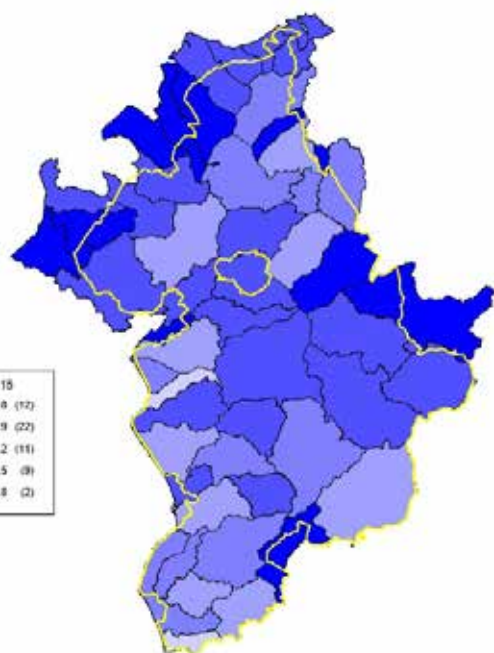
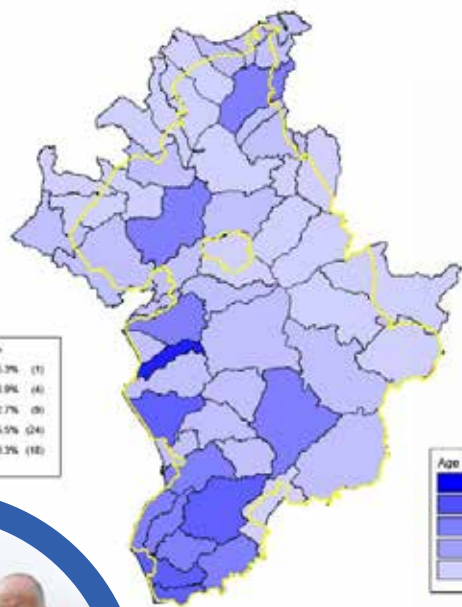
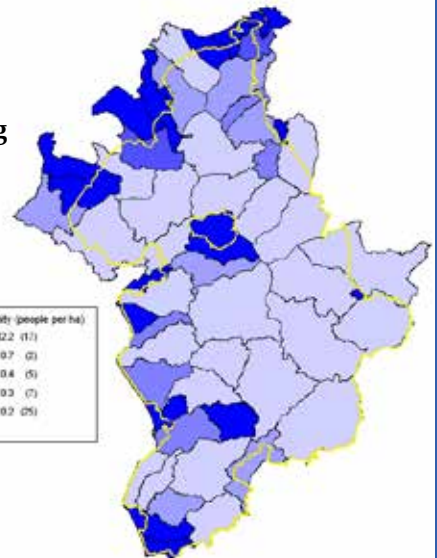
% Vacant Properties 21.9%

Largest town Dolgellau (2,688)

Historical industry Agriculture and quarrying

Main present employment:

Accommodation & food services 14.5%
Retail 12.7%
Education, Health & Public Administration 33.7%



Problems and opportunities in a rural area

Problems

We are losing our young people. They move away to be educated and for better job opportunities and no one's sure yet whether they will return. Older people who have retired move in, changing the nature of the area. Without young people there will be no need for schools in the future and no workforce to look after the elderly.

Opportunities

An activity triangle of excellence was set up between Blaenau Ffestiniog, Coed y Brenin, near Dolgellau and Glanllyn near Bala. This will provide more opportunities for people to do adventurous activities such as mountain biking, sailing and canoeing and will increase the opportunities for locals to work in the leisure industry. With more local young people working within the industry the impact of the active visitor will be greater.

3 key messages

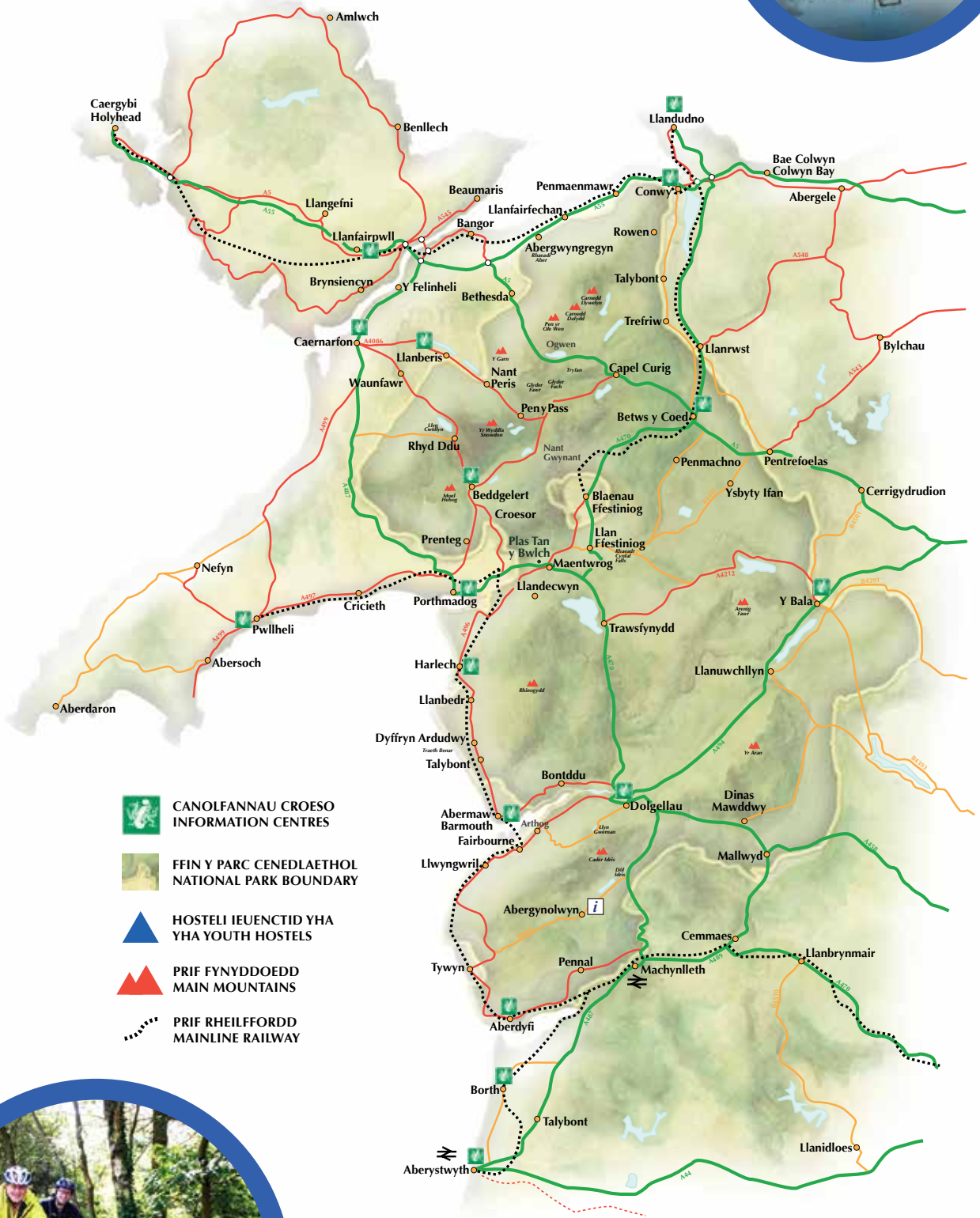
Take your litter home - Bins are really handy in towns and cities, but in the countryside they can be blown over by strong winds or pushed over by animals wanting to get at the crust of your sandwich. Mountains are no place to have bins so we ask people to take their rubbish home. Many don't and this causes problems for wildlife and staff. Help us to look after the area by being considerate.

Keep your dog on a lead - Although we're a National Park, we're not like a park in town where your dog can be let off its lead to chase after a ball. There are animals here. Some dogs will chase after sheep. Some will maul them and kill them. A farmer has a right by law to shoot your dog if it's worrying sheep. So to be on the safe side, and within the law, keep your dog on a lead in open countryside.

Take the bus and remember to park responsibly. Narrow lanes are a vital part of day-to-day life for people living and working in the Park. Inconsiderate parking which blocks verges, roads and gates is never popular. It might be you who needs the emergency services vehicle! We have rare plants that will become extinct if the climate warms up. By reducing our use of resources – fuel in cars, electricity at home, you can help to save them for future generations.



Map



-  CANOLFANNAU CROESO
INFORMATION CENTRES
-  FFIN Y PARC CENEDLAETHOL
NATIONAL PARK BOUNDARY
-  HOSTELI IEUENTID YHA
YHA YOUTH HOSTELS
-  PRIF FYNDDOEDD
MAIN MOUNTAINS
-  PRIF RHEILFFORDD
MAINLINE RAILWAY

