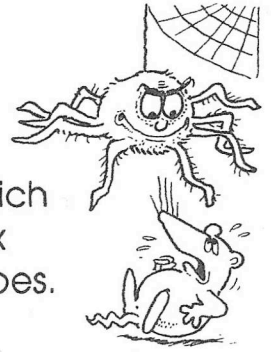


Suffixes from Greek 2



A **suffix** is a letter or group of letters at the end of a word which changes the way you use the word. The spelling of the suffix does not change, but the spelling of the word sometimes does.

Some Help

Here are some common suffixes and their meanings.

gram = written or drawn

graph = that which is written

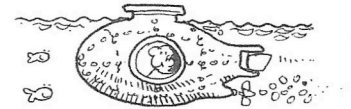
itis = inflammation

phobia = horror

ine = to do with

onym = name

Use a dictionary to find the meanings of these words.
Write the meanings.



anonymous _____

pseudonym _____

crystalline _____

quarantine _____

claustrophobia _____

agoraphobia _____

appendicitis _____

bronchitis _____

autograph _____

paragraph _____

diagram _____

program _____



Turn over and write five sentences using five of these words.