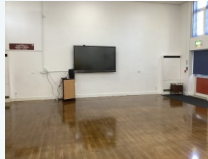

We have two additional rooms, a sensory room and calm room where pupils access one to one or small group support. To view a virtual tour of the Rainbow Rooms please visit: gnoll-primary-school.j2bloggy.com

School begins at 8.50 and ends at 3.10. The Rainbow Rooms have their own access which is through the secure playground area at the front of the school. Lunch time is 11.45 and pupils enter



Gnoll
Primary
School

Wellfield Avenue
Neath
SA11 1AQ

Gnoll Primary LSC

The Rainbow Rooms



Welcome to the Rainbow Rooms at Gnoll
Primary School.

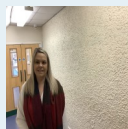
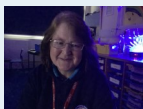


Miss Trollope
(Teacher in charge)



Miss Khakshour
(Teacher)

Teaching assistants



Support for pupils

There are 18 planned places at Groll Primary Learning Support Centre (LSC). All pupils have a prime need of Autism. The LSC is referred to as 'The Rainbow Rooms'. There are two teachers and four teaching assistants. We pride ourselves on providing a high level of individualised support to enable pupils to develop in all areas of the curriculum and develop social communication skills. We provide a number of programmes such as POPAT, Numicon, SMART Moves and atmospherics. We are a Thrive Ambassador School. Pupils have opportunities to integrate where appropriate, dependant on needs. We have our own outdoor play areas which is used for playtime and to access outdoor learning opportunities. We provide life skills opportunities and walk to the local shops on a weekly basis.

Parent/carer support

- ◆ Open door policy
- ◆ Home school links via email
- ◆ Regular coffee mornings for parents/carers to meet
- ◆ Regular training and updates for parents/carers delivered by LSC staff and outside agencies



Outdoor area which is currently being