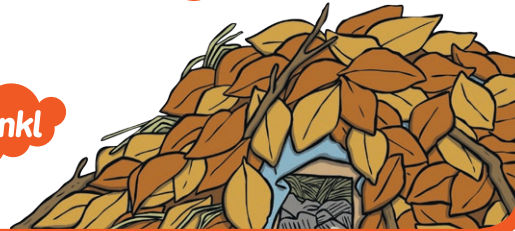


Don't Hog the Hedge!



Addition and Subtraction Challenge Cards

twinkl



Don't Hog the Hedge! - Addition and Subtraction



1.

1 hedgehog and 3 dormice crawled into the hedge.

How many animals crawled into the hedge altogether?



twinkl.com

Don't Hog the Hedge! - Addition and Subtraction



2.

Hattie used 4 twigs to make her bed. Then she added 5 more.

How many twigs did Hattie use altogether?



twinkl.com

Don't Hog the Hedge! - Addition and Subtraction



3.

7 animals were in the hedge. 3 of them went outside.

How many animals did **not** go outside?



twinkl.com



4.

There were 10 leaves on the tree. 8 of them blew away.

How many leaves were left on the tree?



5.

18 animals were inside Hattie's hedge. Another 13 crawled in too.

How many animals were in Hattie's hedge altogether?



6.

A flock of 28 birds flew over Hattie's hedge. 16 of them landed.

How many birds did **not** land?



7.

Last year, 28 animals squeezed into Hattie's hedge. This year, there were 12 more than last year.

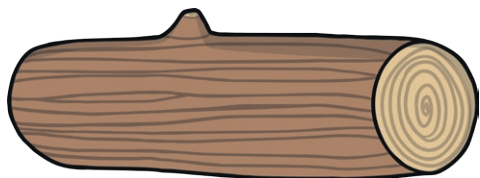
How many animals were in the hedge this year?



8.

This year, 36 animals hibernated in the cave. 19 fewer animals hibernated in the log.

How many animals hibernated in the log?



9.

Last year, Hattie began hibernating on the 28th of September. This year, she will start hibernating on the 8th of October.

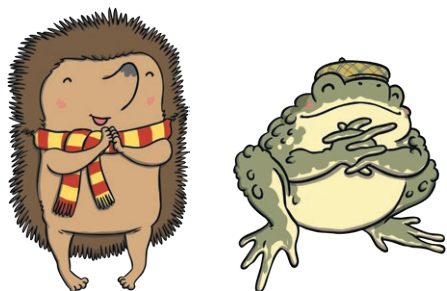
How many extra days did Hattie stay awake for this year?



10.

Hattie normally sleeps for 1 hour at a time. Toby only sleeps for 36 minutes at a time.

How much longer does Hattie sleep for?



11.

This winter, 24 animals began hibernating in September, 28 began in October and 12 began in November.

a) How many animals hibernated altogether this winter?

b) How many more animals hibernated in October and November combined, compared to September?



12.

It takes Hattie 23 days to find all of the leaves she will need to hibernate. It also takes her 15 days to find the sticks to make her den.

Finding the food she needs for winter takes 12 days less than the total time it takes to find the leaves and sticks.

How long does it take Hattie to find her food?

twinkl.com

Answers

- 1) 4
- 2) 9
- 3) 4
- 4) 2
- 5) 31
- 6) 12
- 7) 40
- 8) 17
- 9) 10 days
- 10) 24 minutes
- 11) a) 64
b) 16
- 12) 26 days